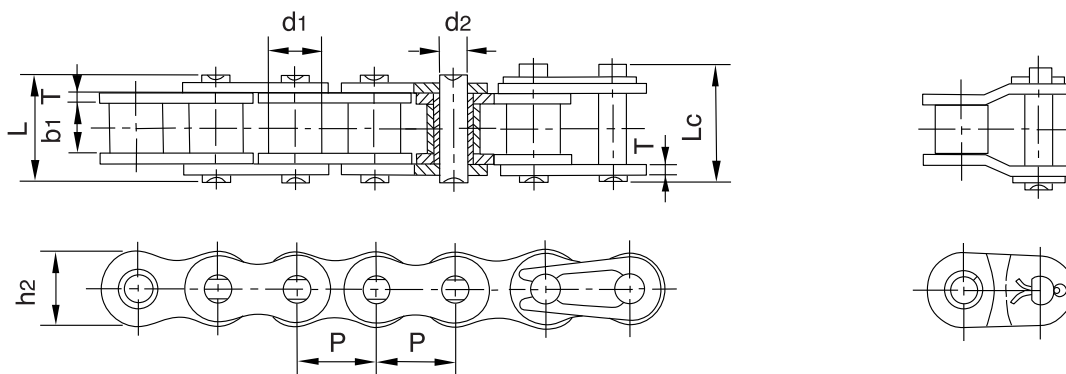


Cadenas de Rodillos / SERIE A



REFERENCIA	REFERENCIA	PASO	DIAMETRO DE RODILLO	ANCHO INTERIOR	DIAMETRO EJE	LONGITUD DEL EJE		ANCHO MALLAS	GROSOR DE MALLAS	FUERZA DE TENSION TOTAL	FUERZA DE TENSION MEDIA	PESO POR METRO
DIN/ISO	ANSI	P	d1 máx	b1 mín	d2 máx	L máx	Lc mín	h2 máx	T máx	Q mín.	Q0	q
		mm.	mm.	mm.	mm.	mm.	mm.	mm.	mm.	kN	kN	kg./m.
*03C	*15	4.7625	2.48	2.38	1.62	6.10	6.90	4.30	0.60	1.80	2.0	0.08
*04C-1	*25	6.350	3.30	3.18	2.31	7.90	8.40	6.00	0.80	3.50	4.6	0.15
*06C-1	*35	9.525	5.08	4.77	3.58	12.40	13.17	9.00	1.30	7.90	10.8	0.33
085-1	41	12.700	7.77	6.25	3.58	13.75	15.00	9.91	1.30	6.67	12.6	0.41
08A-1	40	12.700	7.95	7.85	3.96	16.60	17.80	12.00	1.50	14.10	17.5	0.62
10A-1	50	15.875	10.16	9.40	5.08	20.70	22.20	15.09	2.03	22.20	29.4	1.02
12A-1	60	19.050	11.91	12.57	5.94	25.90	27.70	18.00	2.42	31.80	41.5	1.50
16A-1	80	25.400	15.88	15.75	7.92	32.70	35.00	24.00	3.25	56.70	69.4	2.60
20A-1	100	31.750	19.05	18.90	9.53	40.40	44.70	30.00	4.00	88.50	109.2	3.91
24A-1	120	38.100	22.23	25.22	11.10	50.30	54.30	35.70	4.80	127.00	156.3	5.62
28A-1	140	44.450	25.40	25.22	12.70	54.40	59.00	41.00	5.60	172.40	212.0	7.50
32A-1	160	50.800	28.58	31.55	14.27	64.80	69.60	47.80	6.40	226.80	278.9	10.10
36A-1	180	57.150	35.71	35.48	17.46	72.80	78.60	53.60	7.20	280.20	341.8	13.45
40A-1	200	63.500	39.68	37.85	19.85	80.30	87.20	60.00	8.00	353.80	431.6	16.15
48A-1	240	76.200	47.63	47.35	23.81	95.50	103.00	72.39	9.50	510.30	622.5	23.20

* Cadena casquillo fijo: d1 en la tabla indica el diámetro exterior del casquillo